

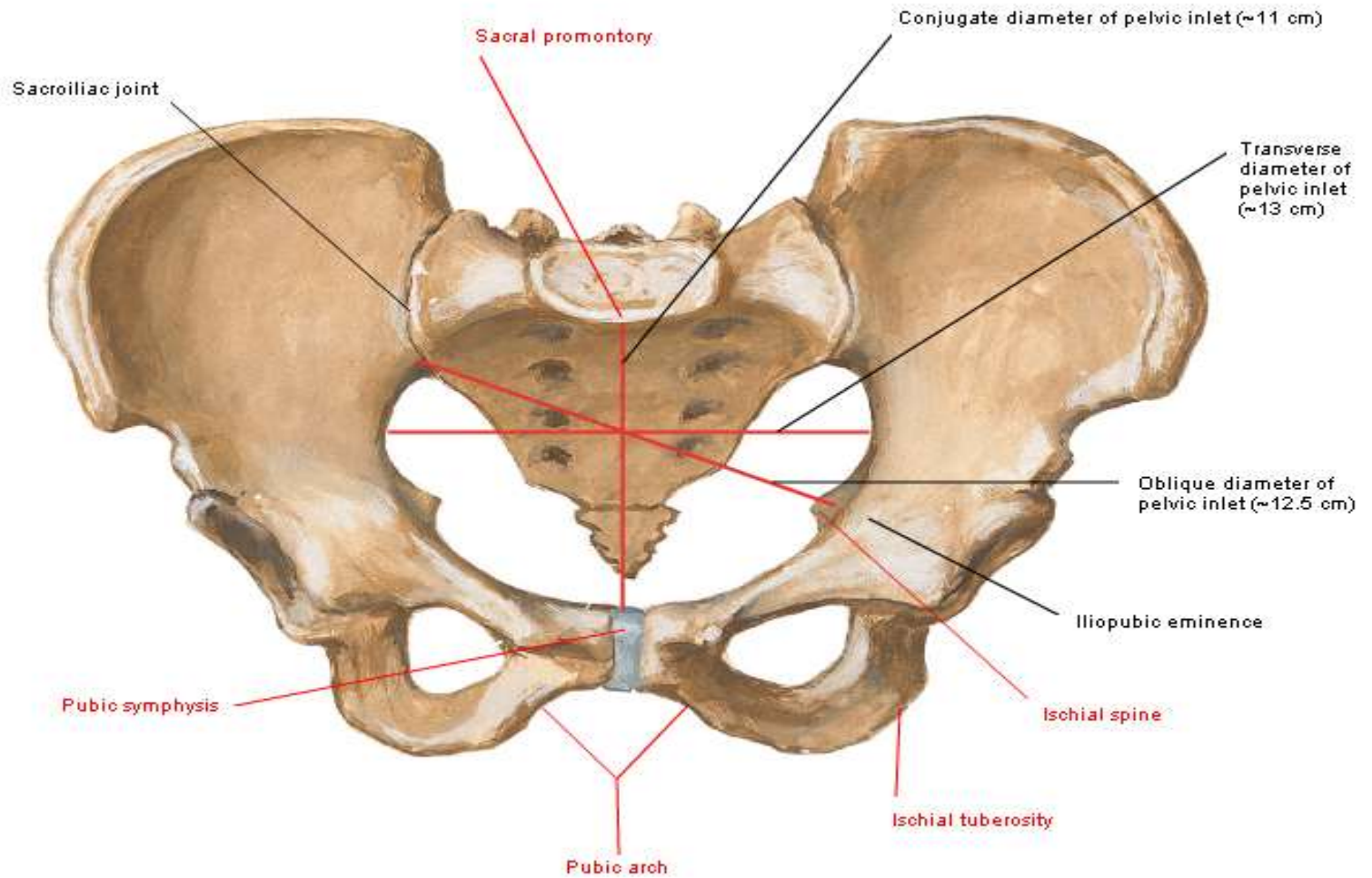
# ANATOMY LAB

**Female Reproductive System**

**Pre-lab 1**

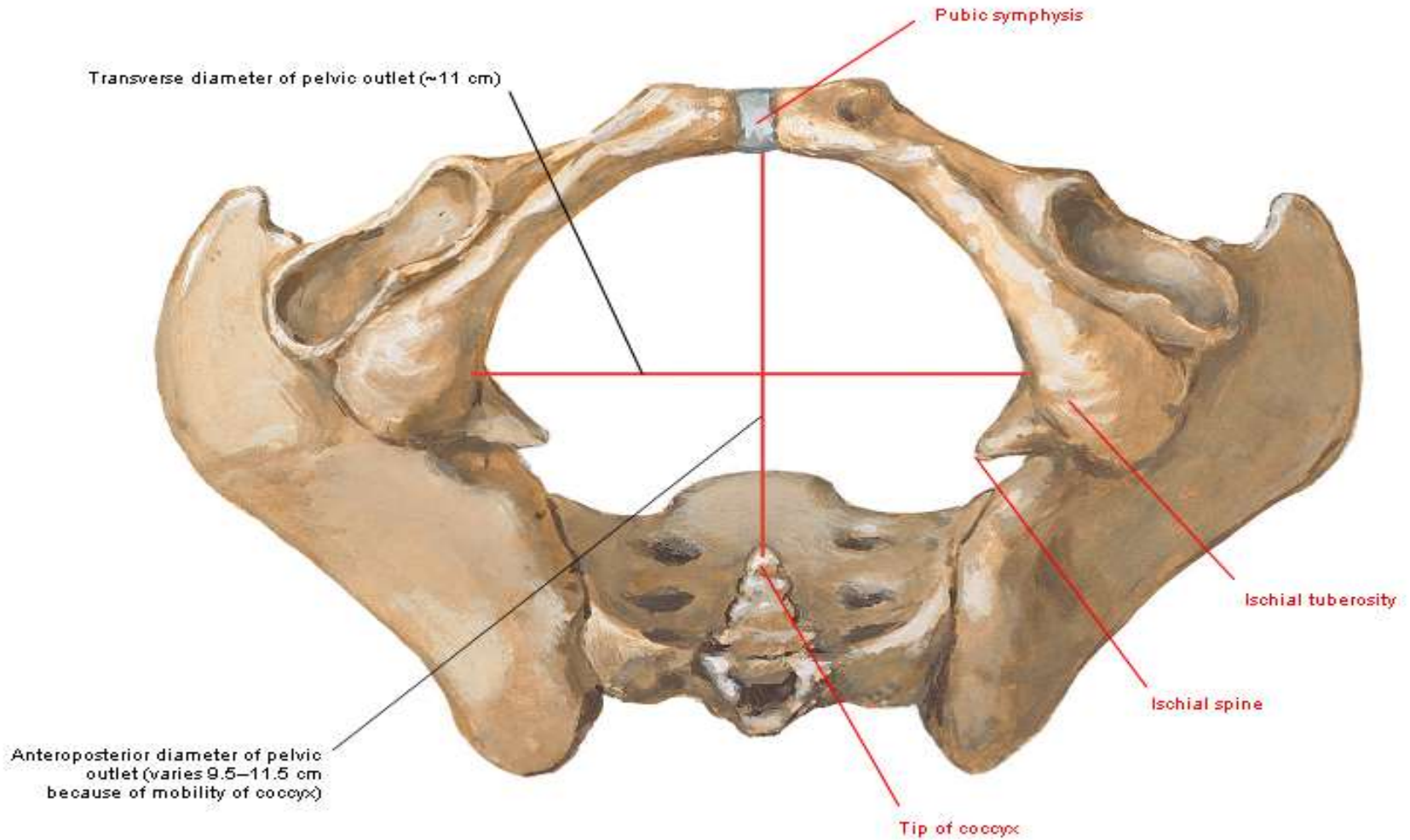
# Female Pelvis

## Measurements - Anterior View



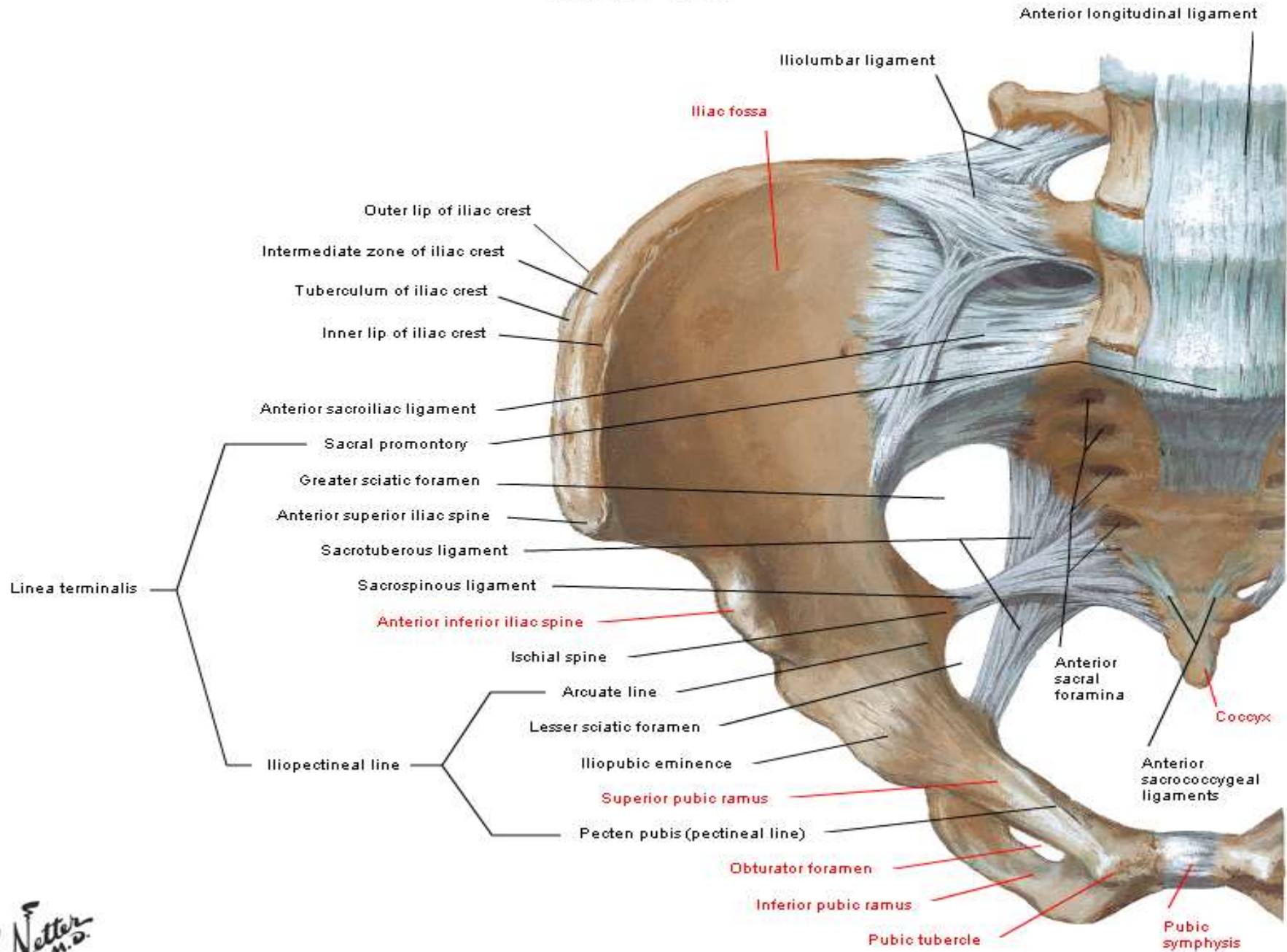
# Female Pelvis

## Measurements - Inferior View



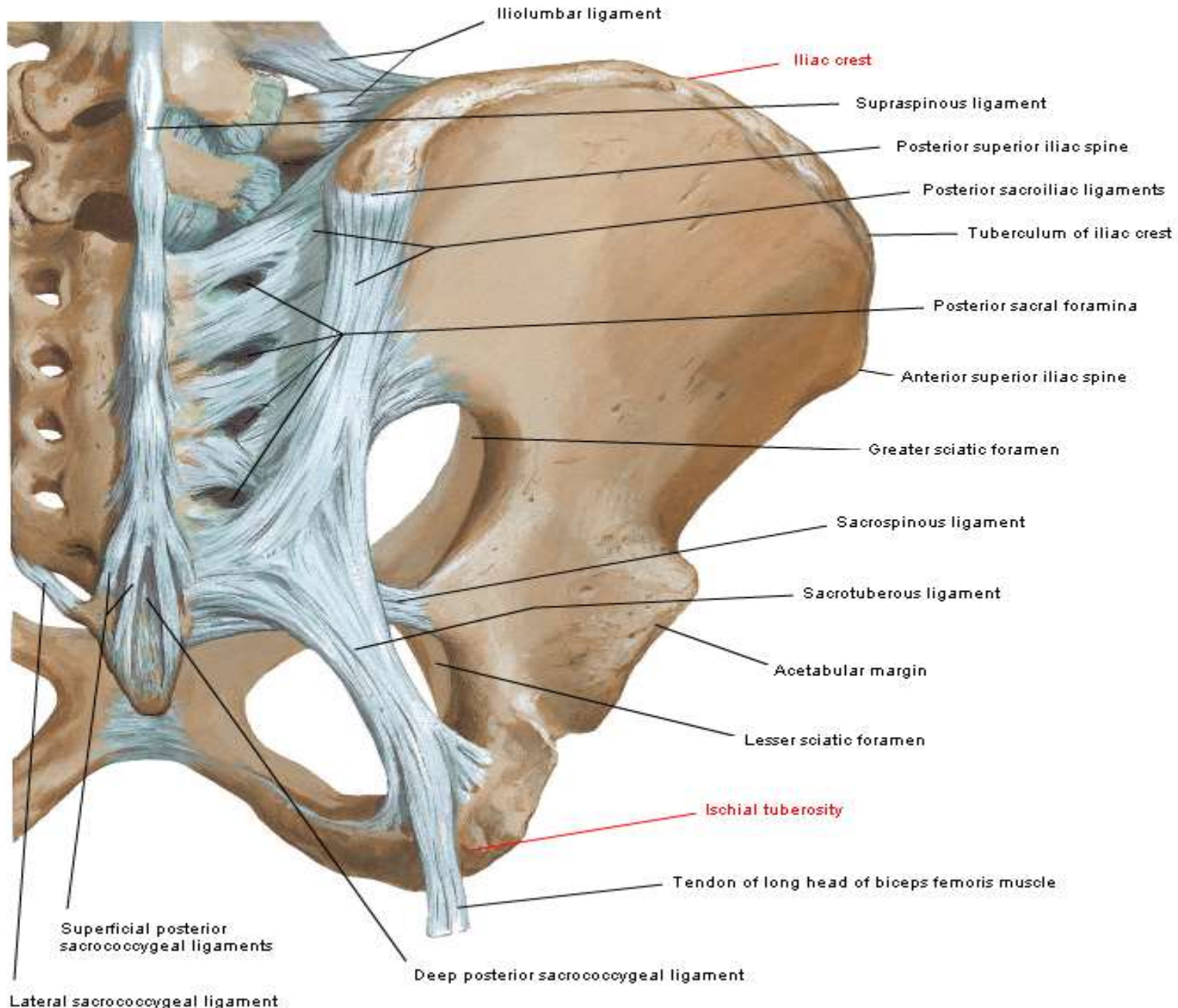
# Bones and Ligaments of Pelvis

## Anterior View



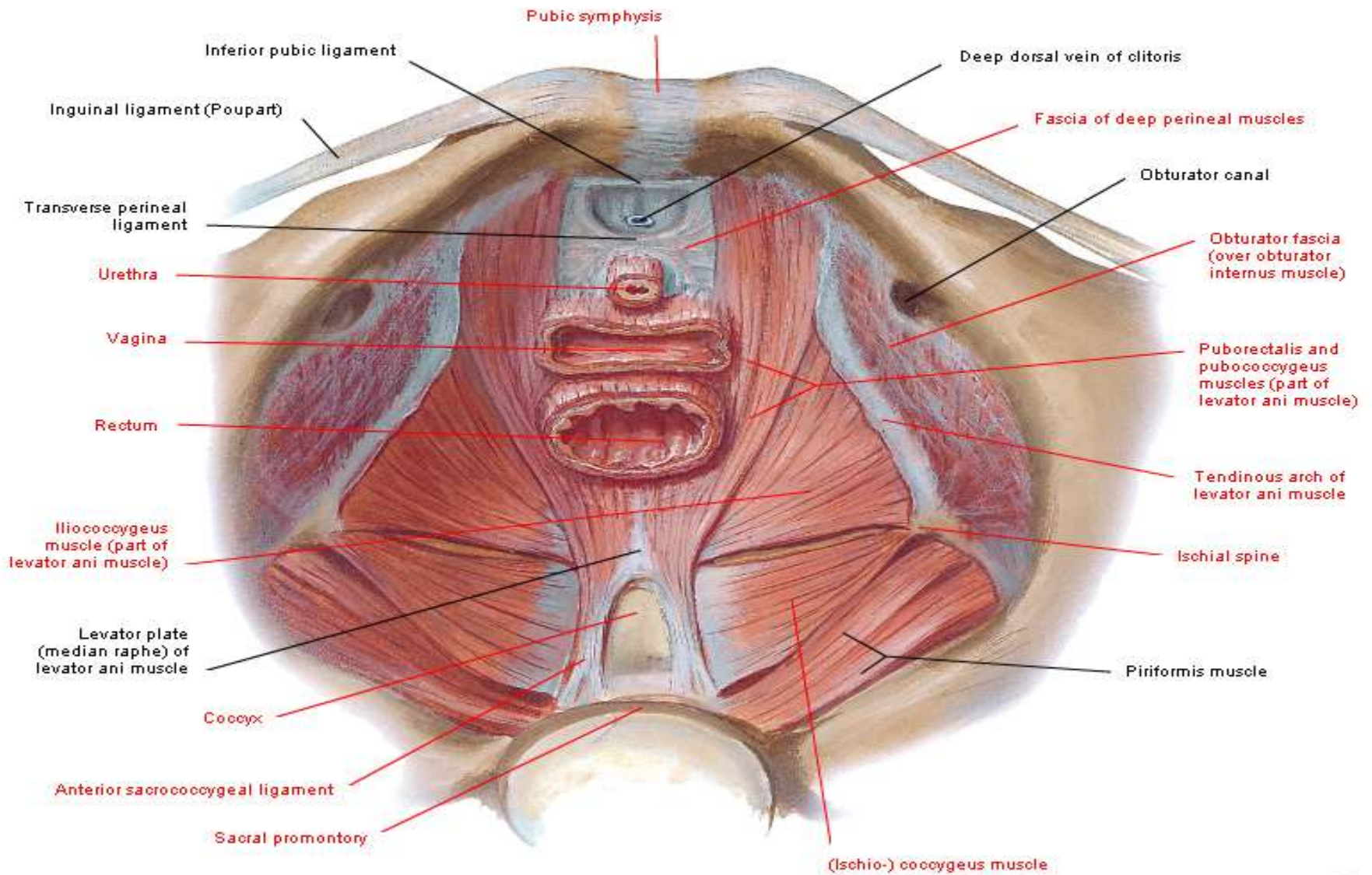
# Bones and Ligaments of Pelvis

## Posterior View



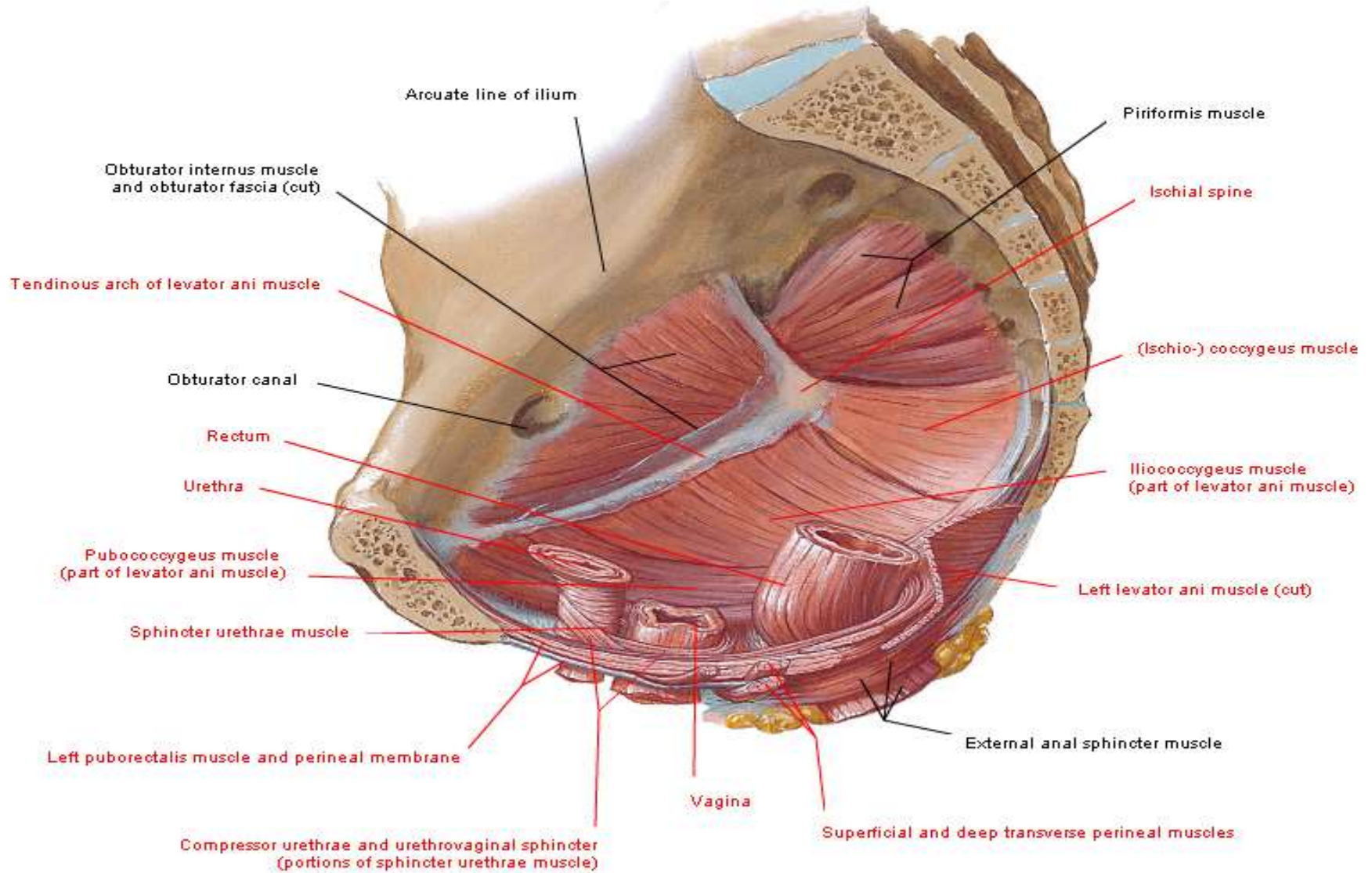
# Pelvic Diaphragm of Female

## Superior View



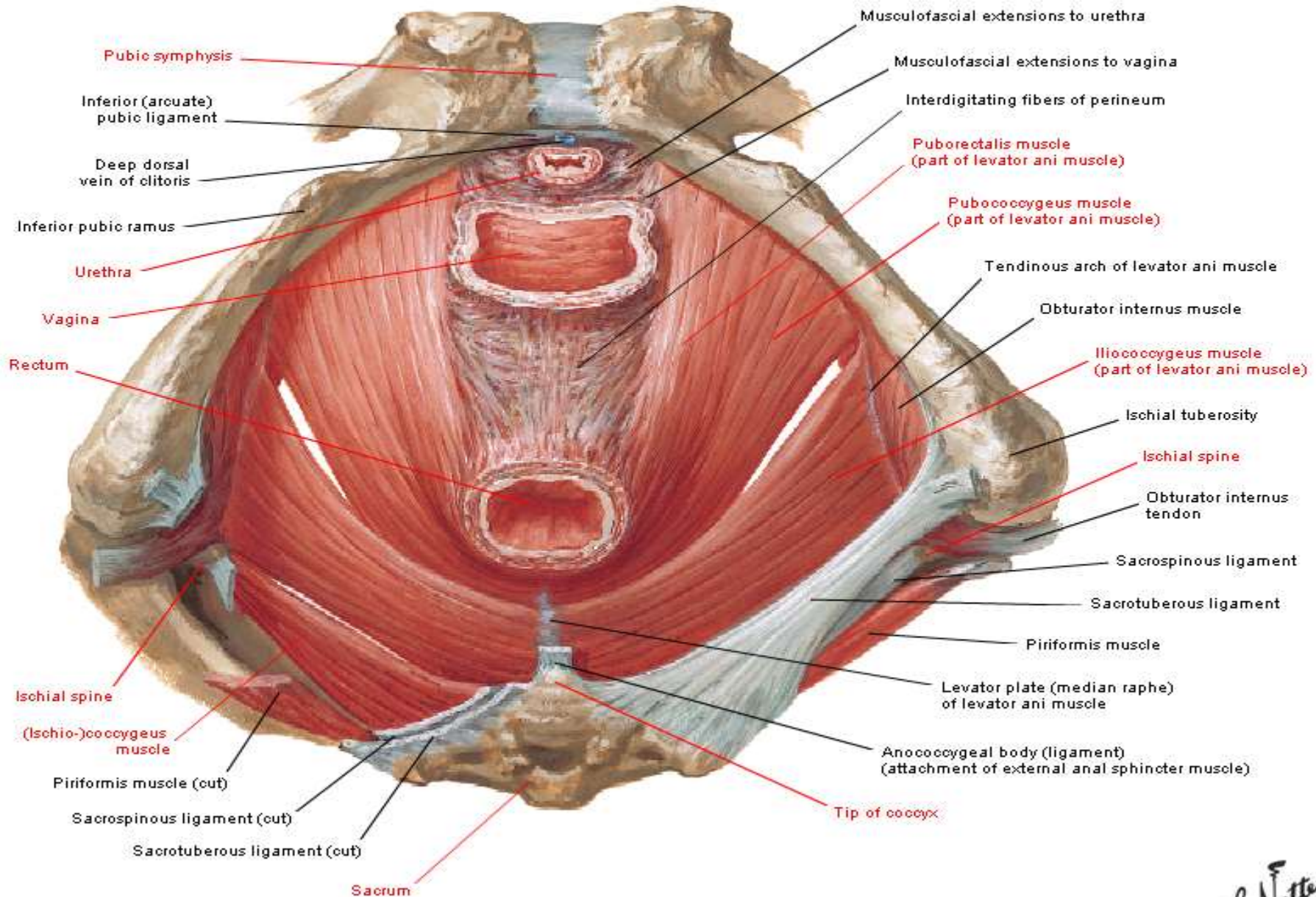
# Pelvic Diaphragm of Female

## Medial View



# Pelvic Diaphragm of Female

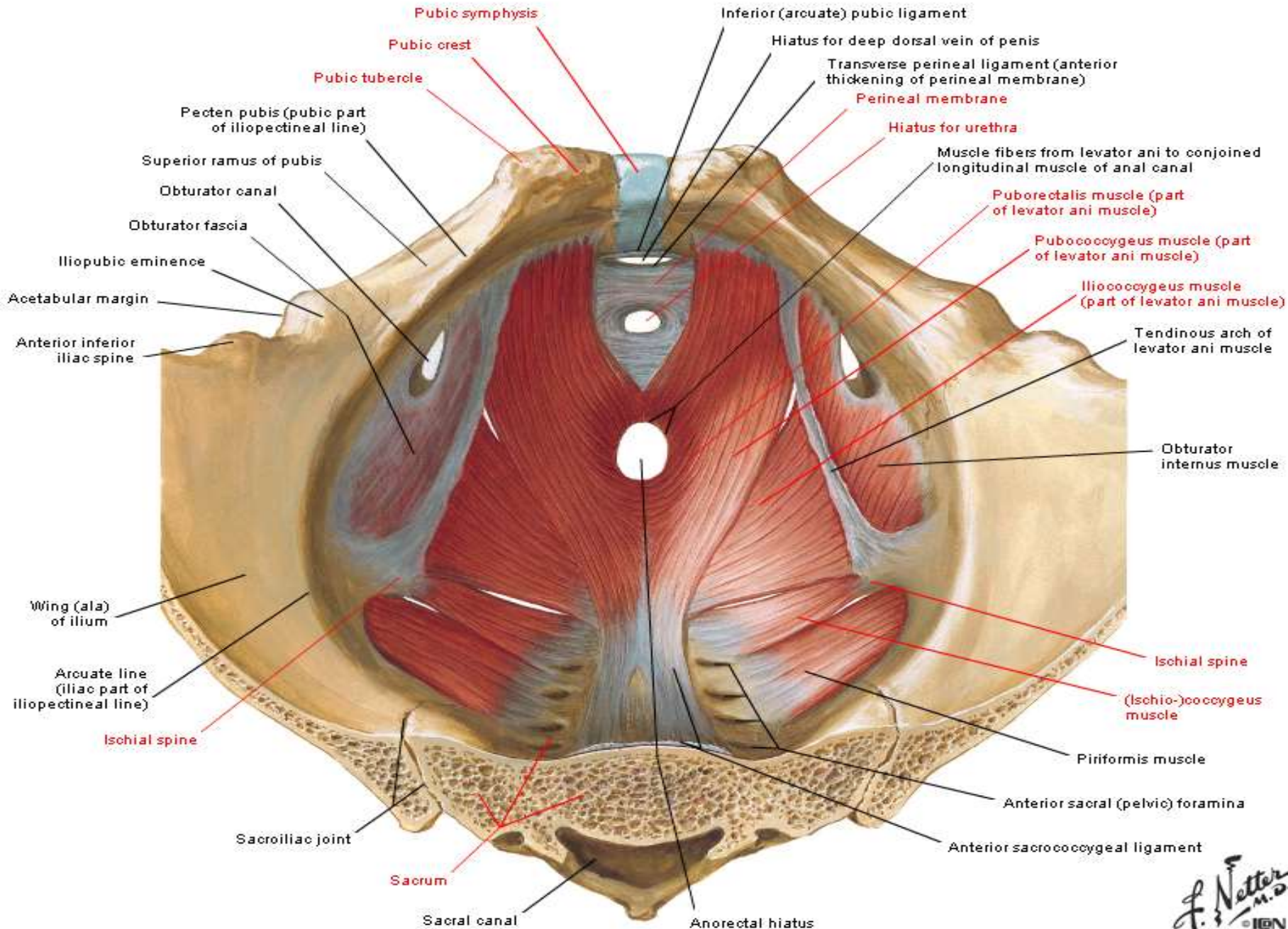
## Inferior View





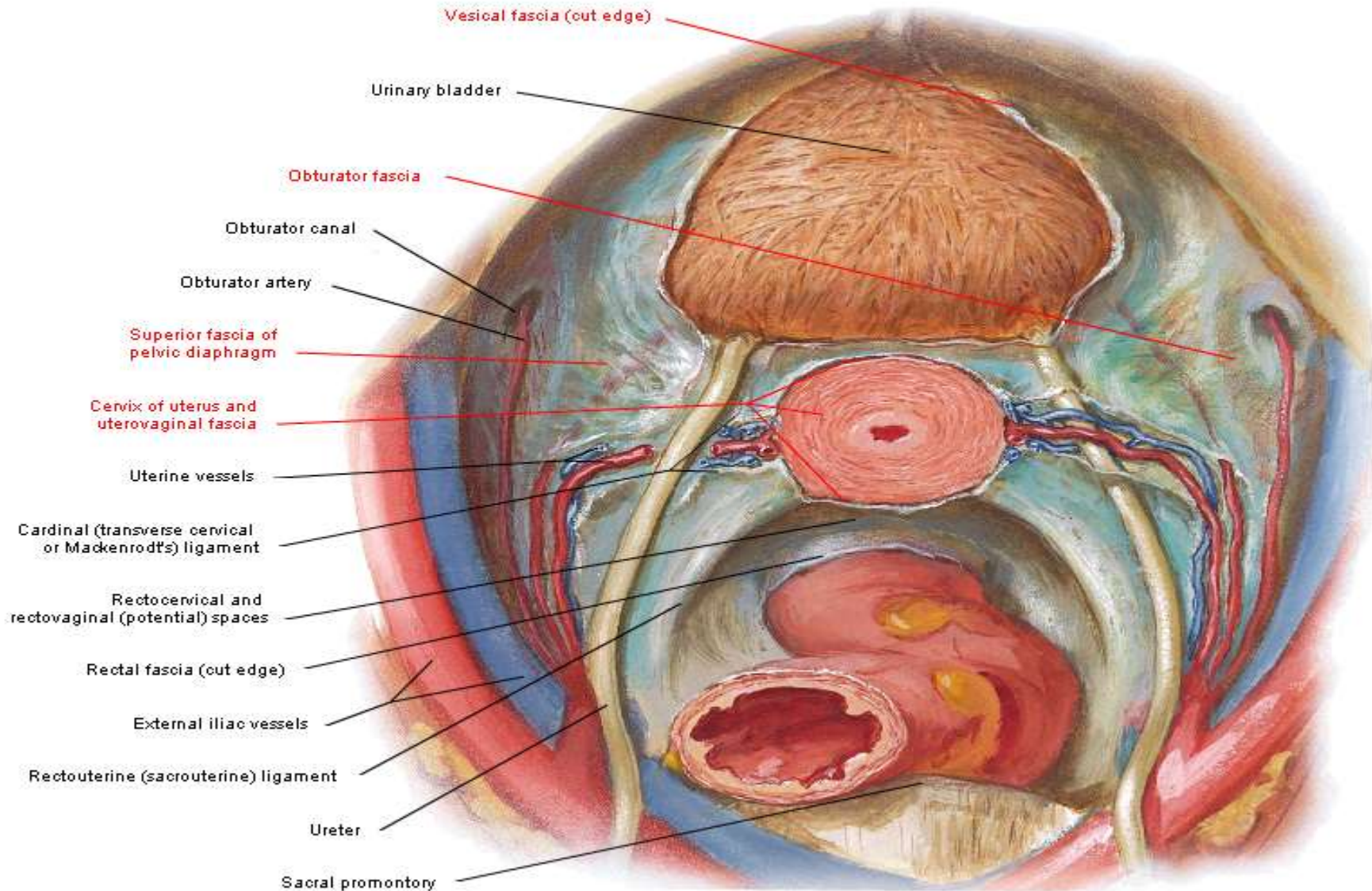
# Pelvic Diaphragm of Male

## Superior View - Viscera Removed



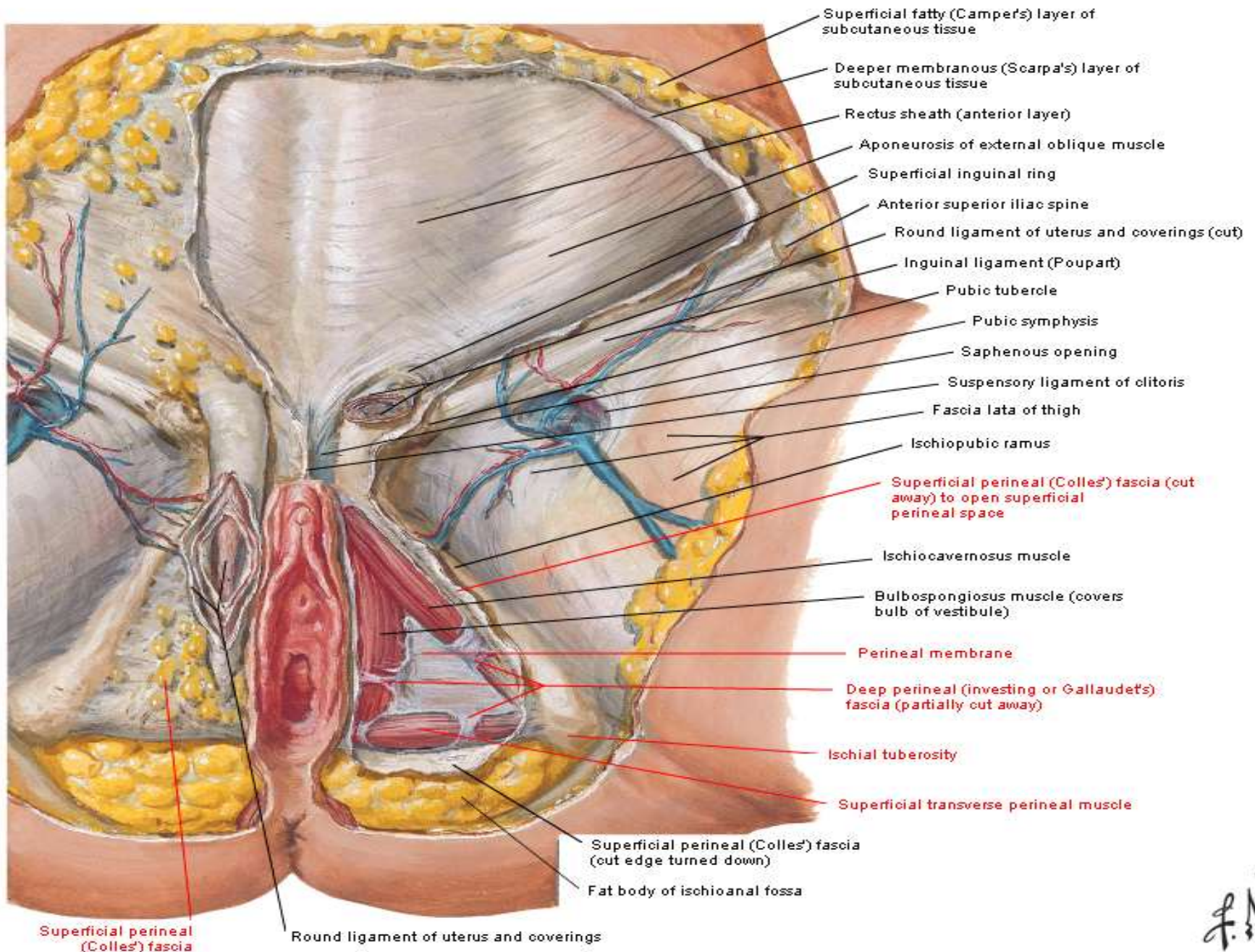
# Pelvic Viscera of Female

## Superior View - Peritoneum Removed



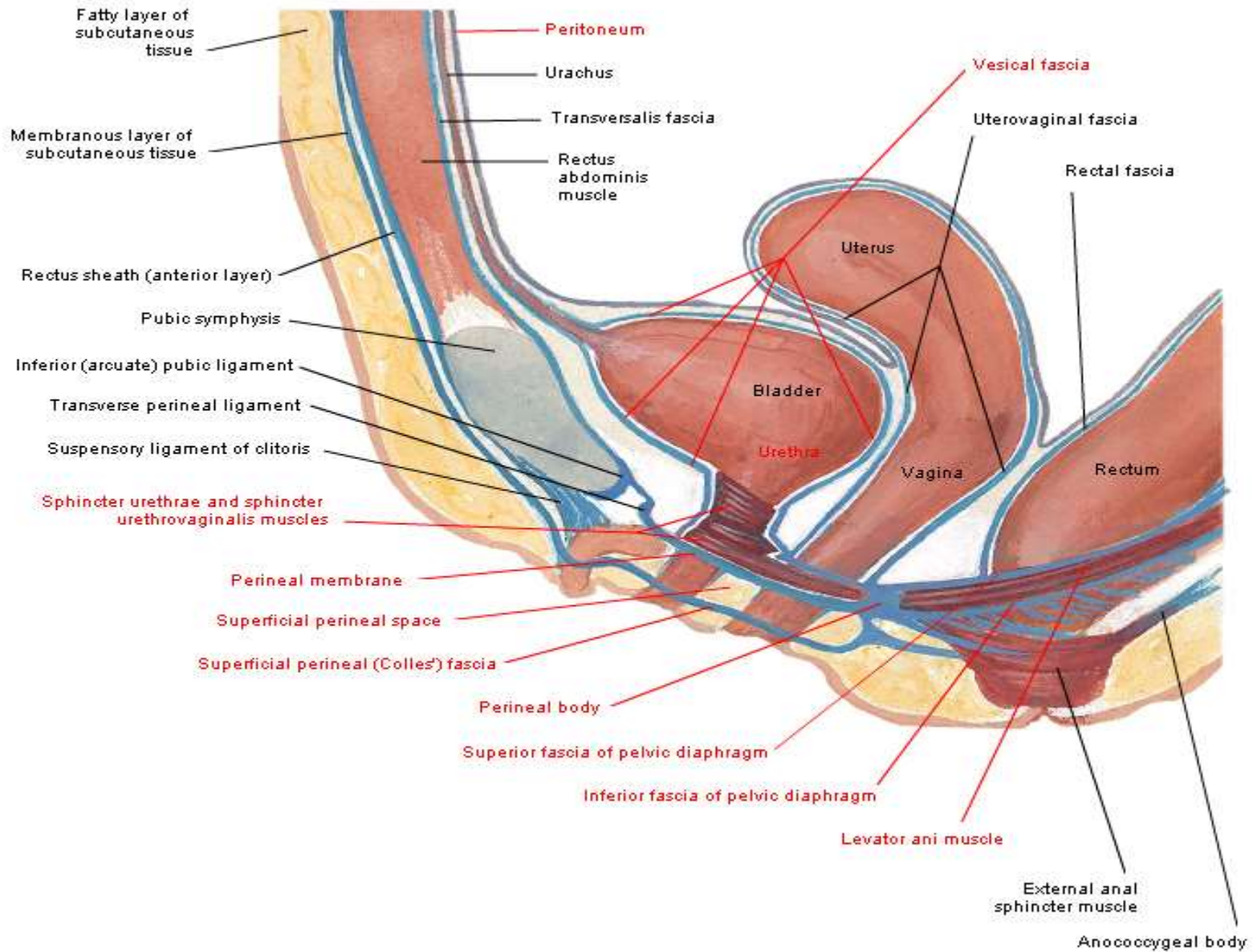
# Perineum of Female

## Superficial Dissection

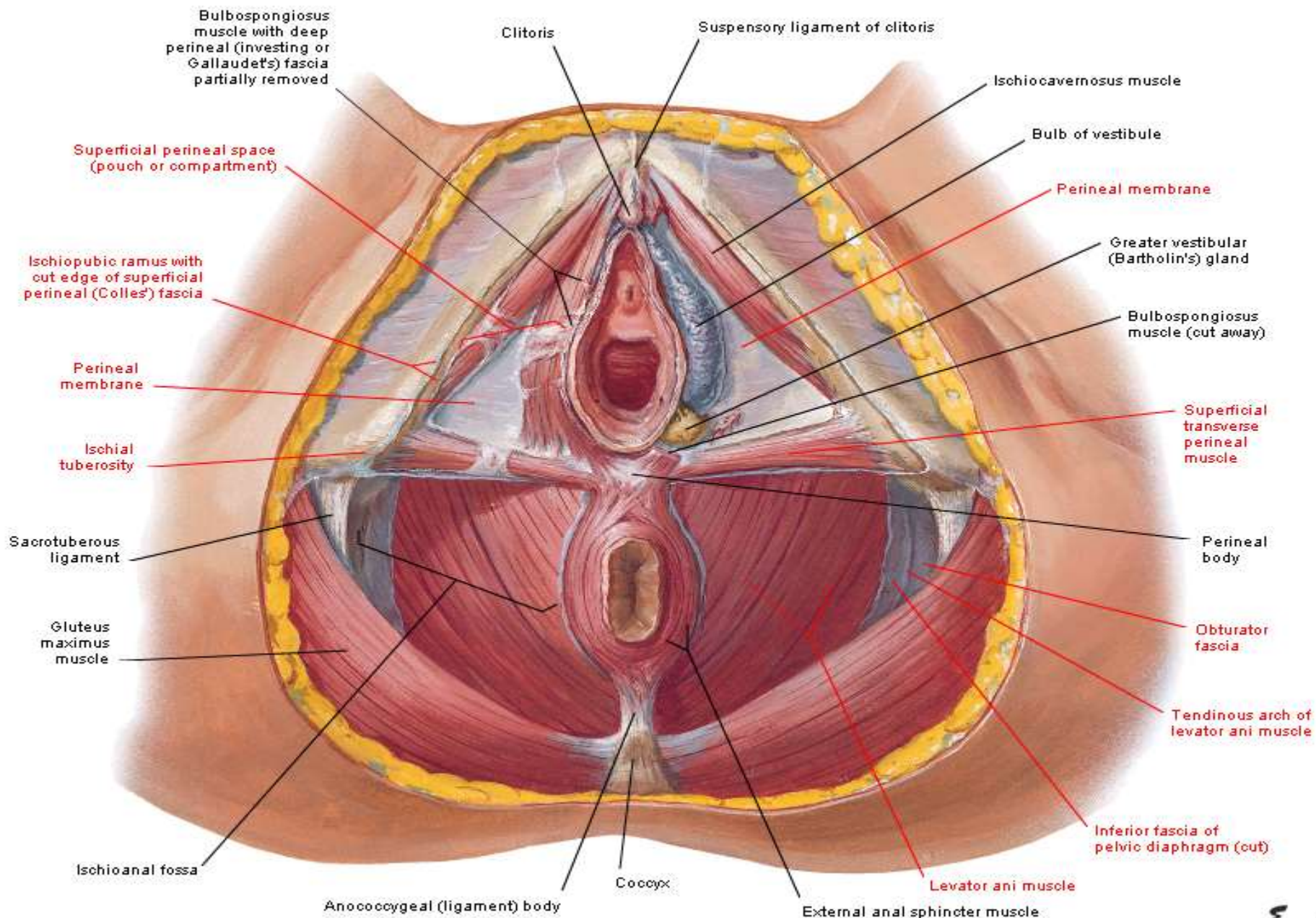


# Perineum of Female

## Sagittal Section

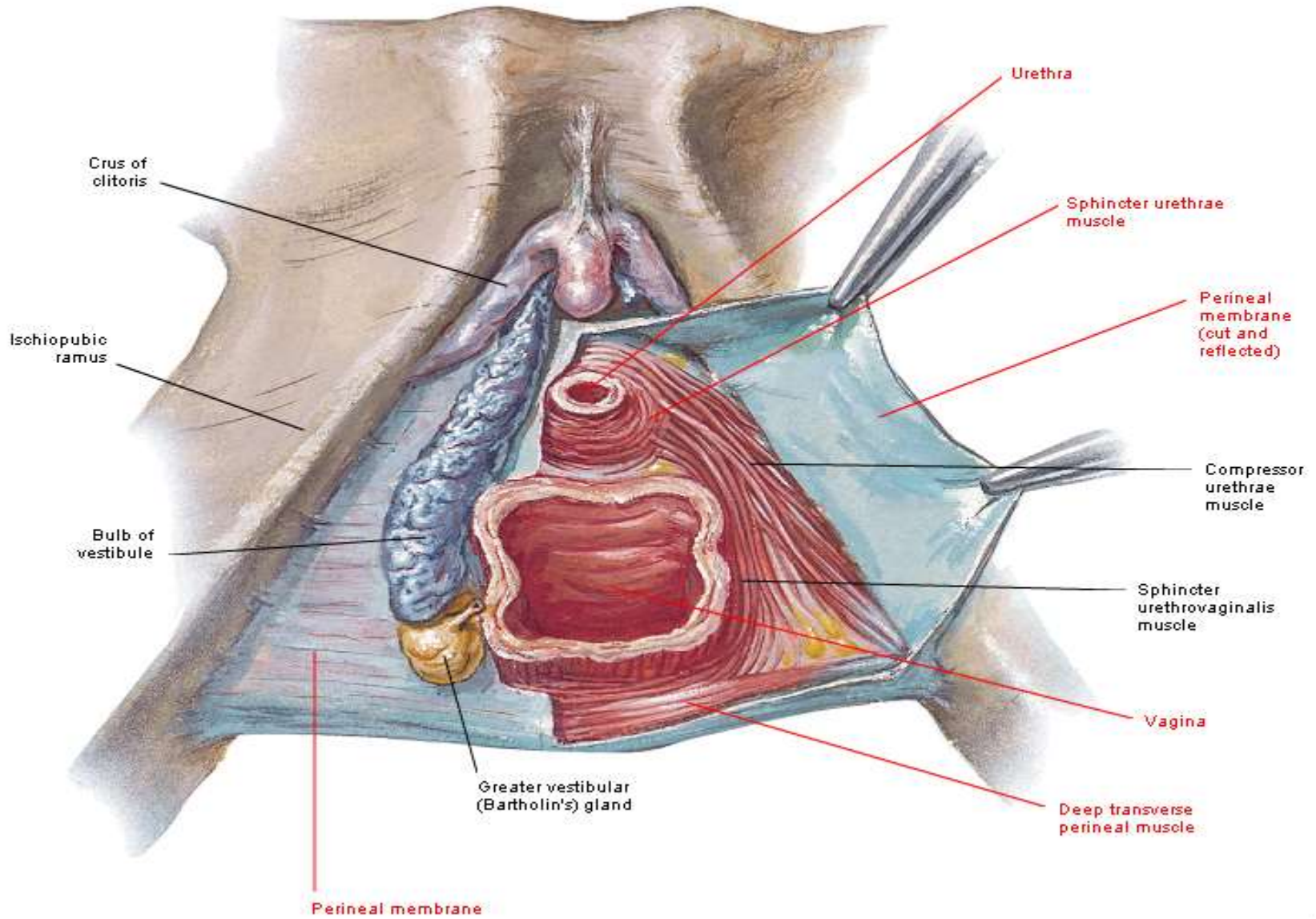


# Superficial Perineum of Female

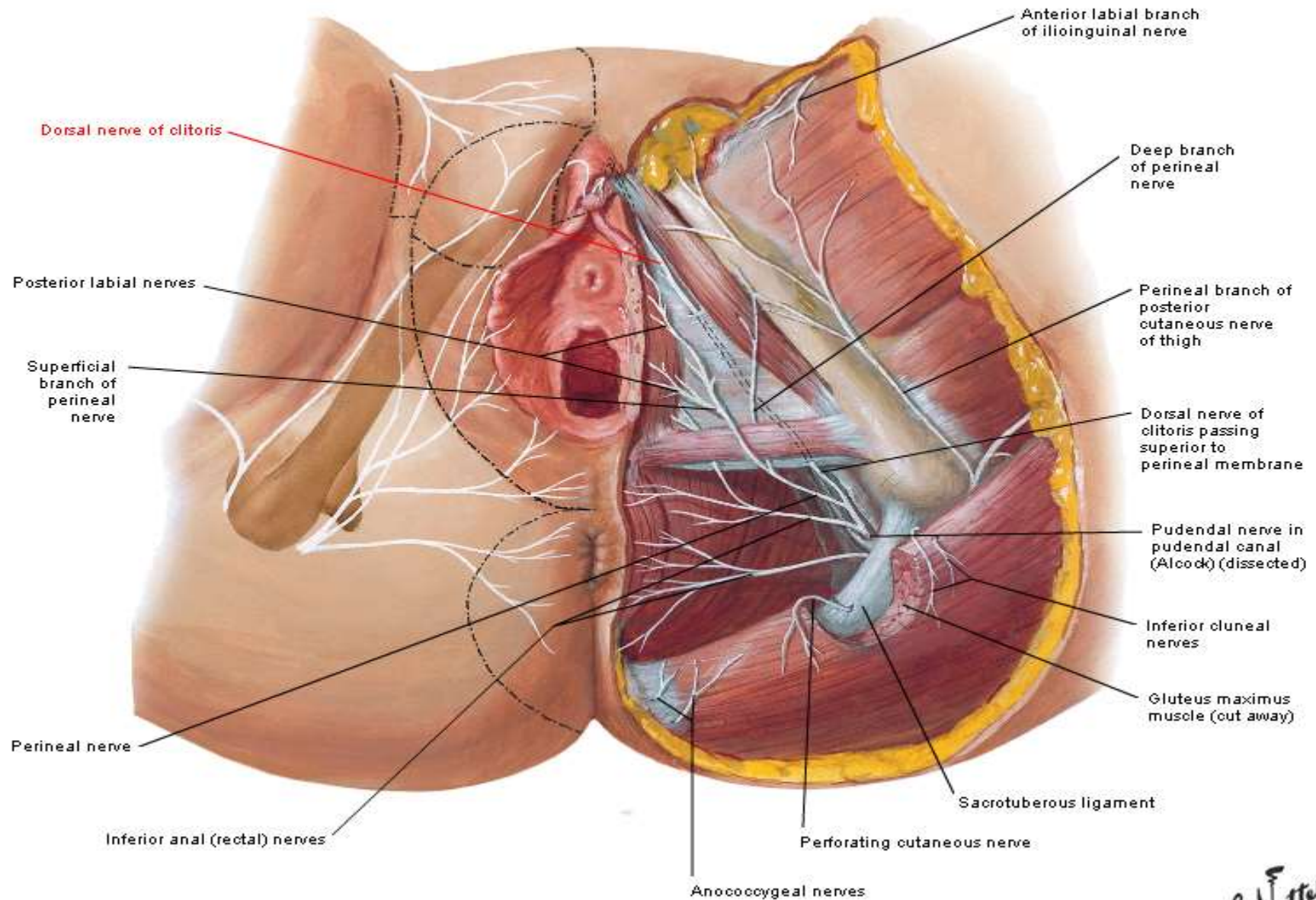


# Perineum of Female

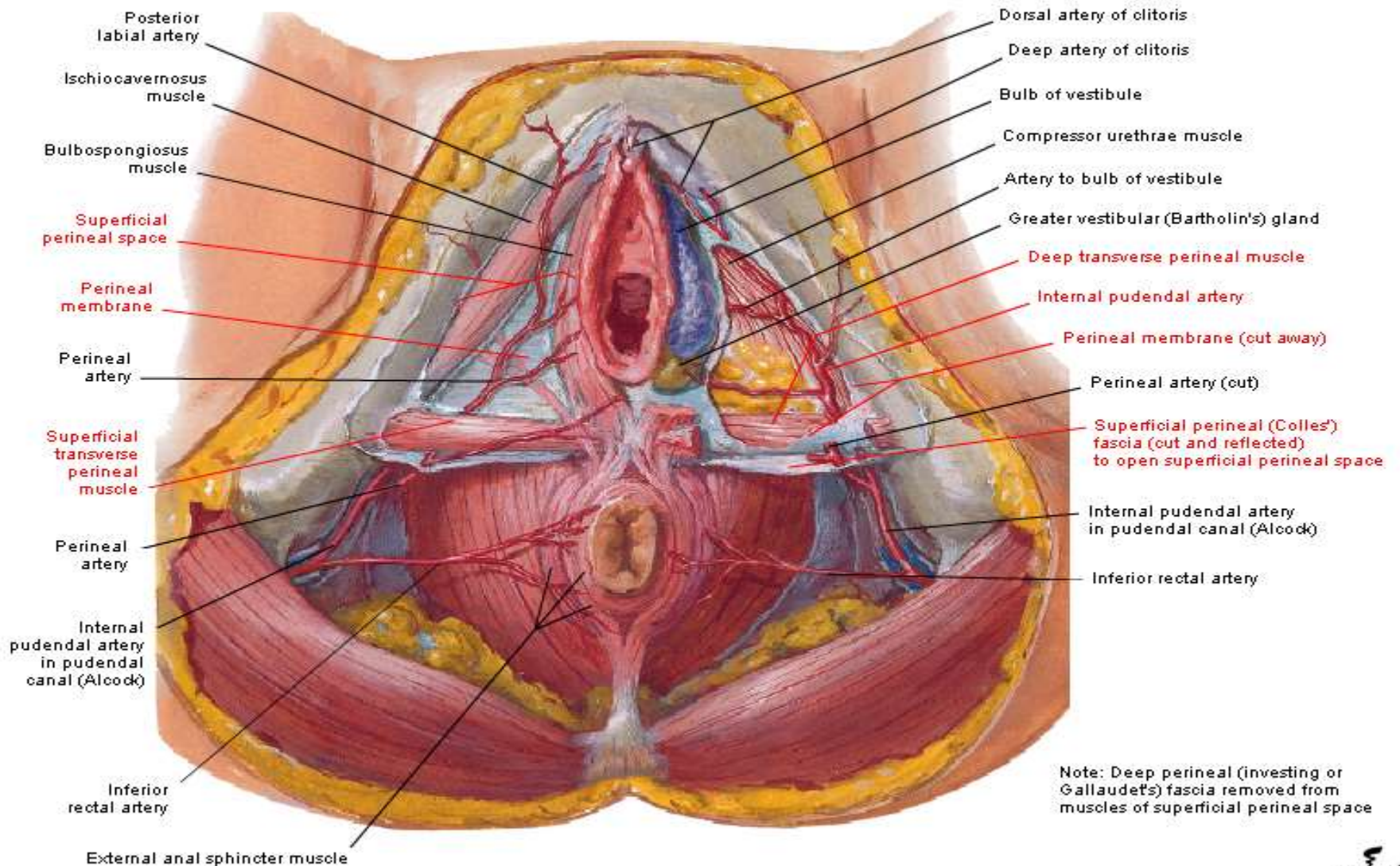
## Deep Dissection



# Nerves of Perineum and External Genitalia Female



# Arteries and Veins of Perineum Female



Note: Deep perineal (investing or Gallaudet's) fascia removed from muscles of superficial perineal space

*F. Netter M.D.*  
*C. Machado M.D.*



# Urinary Bladder - Orientation and Supports

## Superior View

