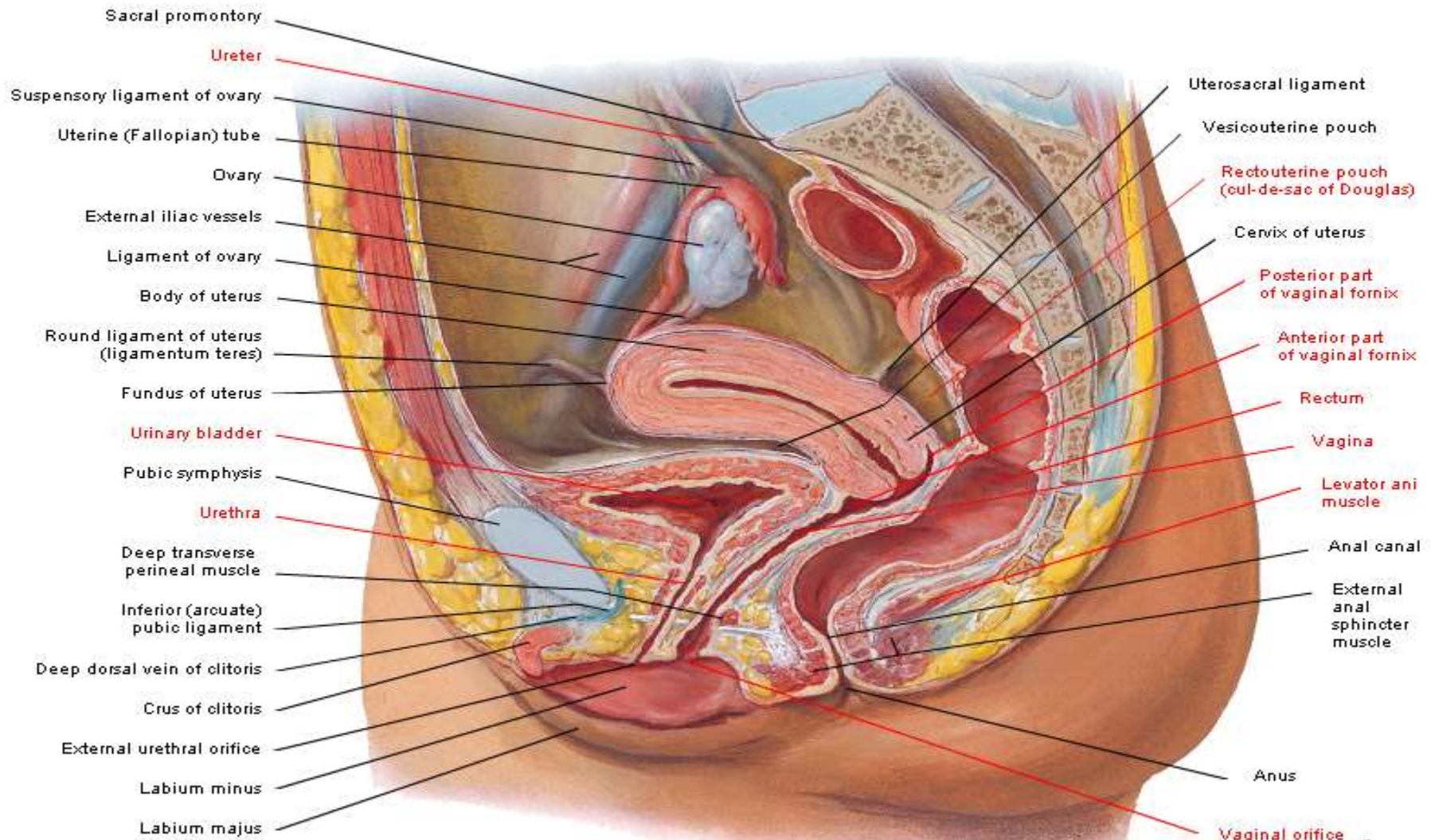


# ANATOMY LAB

PRE LAB - 3

# Pelvic Viscera and Perineum of Female

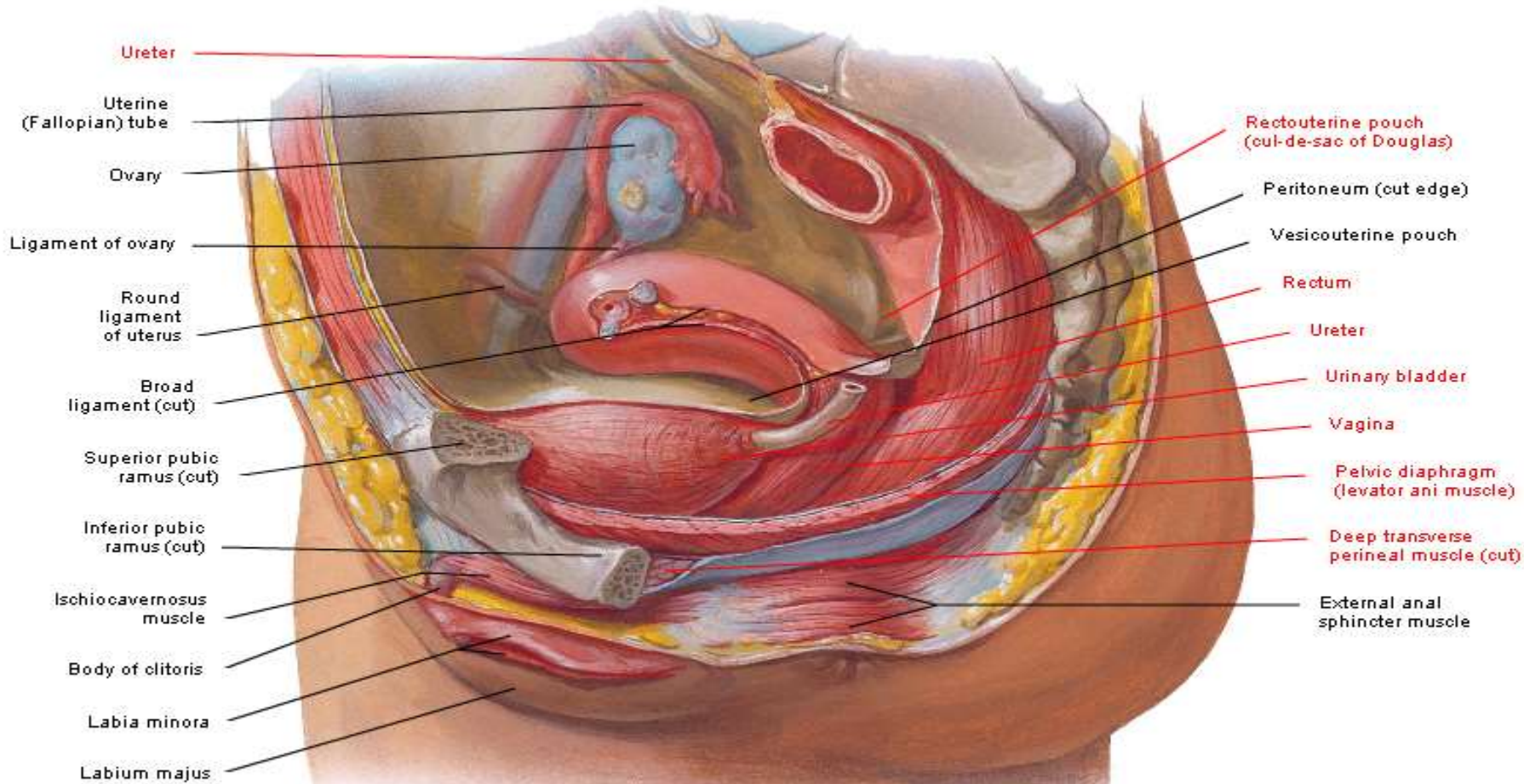
## Median (Sagittal) Section



*F. Netter M.D.*  
*C. Machado M.D.*

# Pelvic Viscera and Perineum of Female

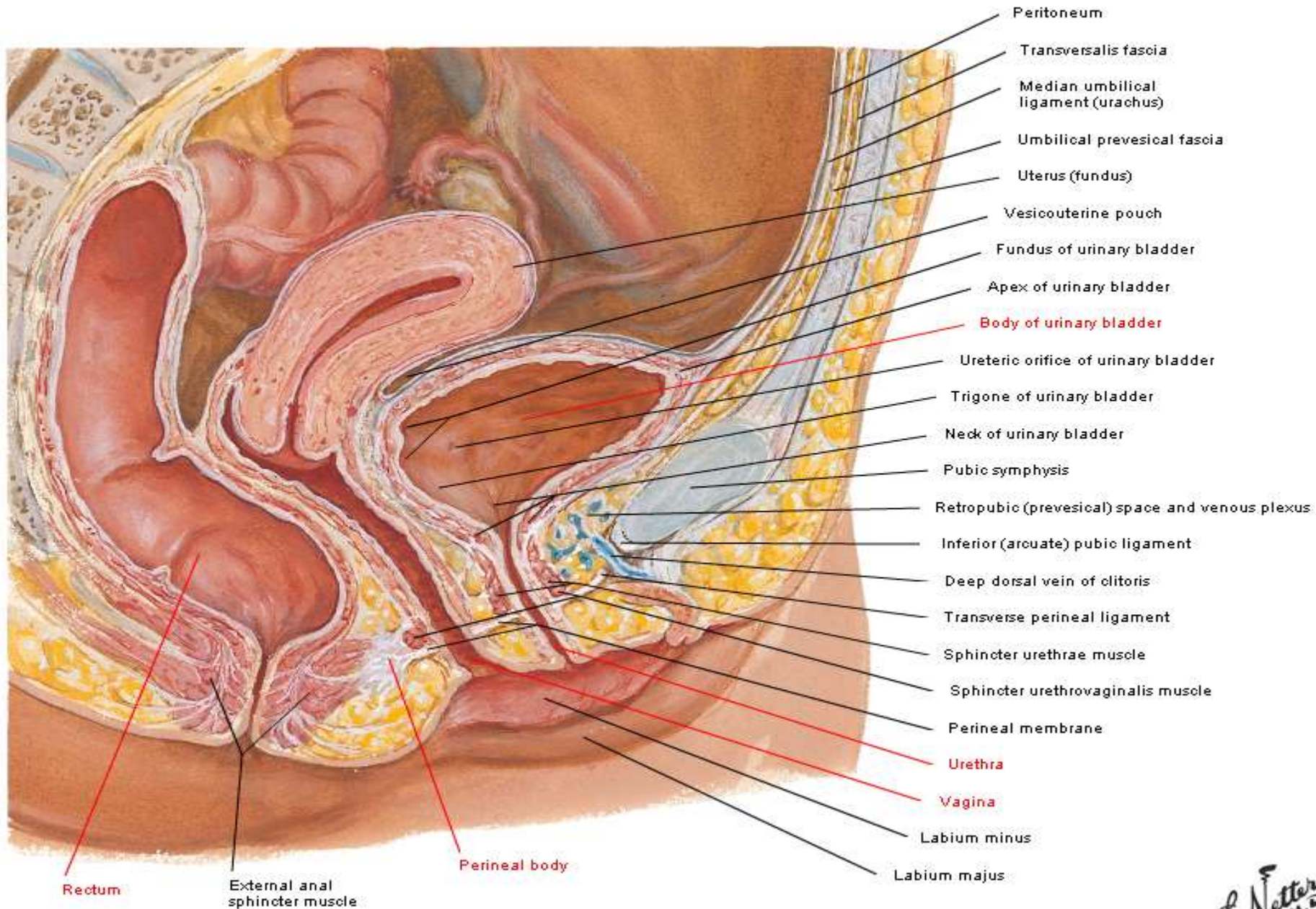
## Paramedian Sagittal Dissection



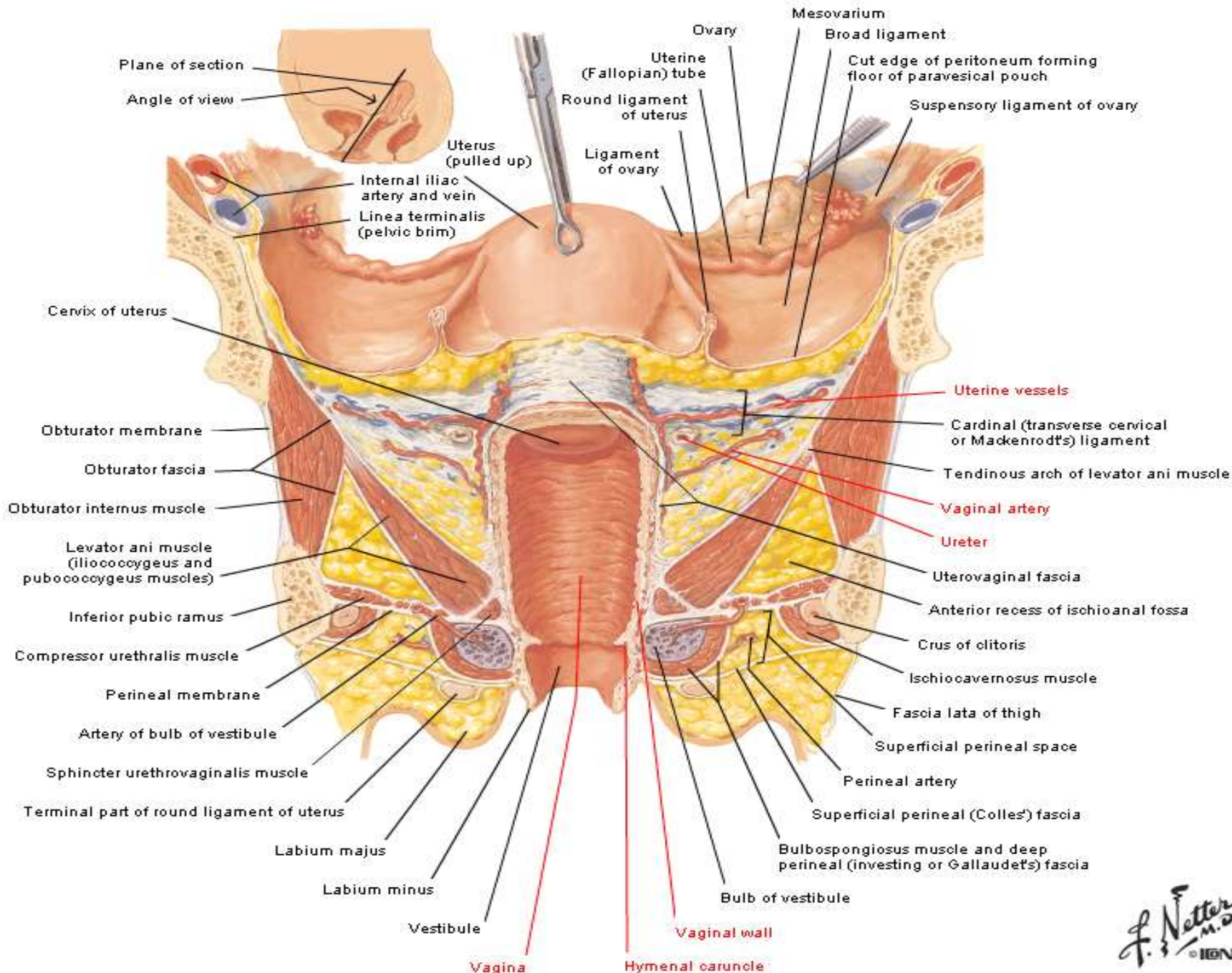
*F. Netter*  
M.D.  
*C. Machado*  
M.D.

# Urinary Bladder - Orientation and Supports

## Midsagittal Section

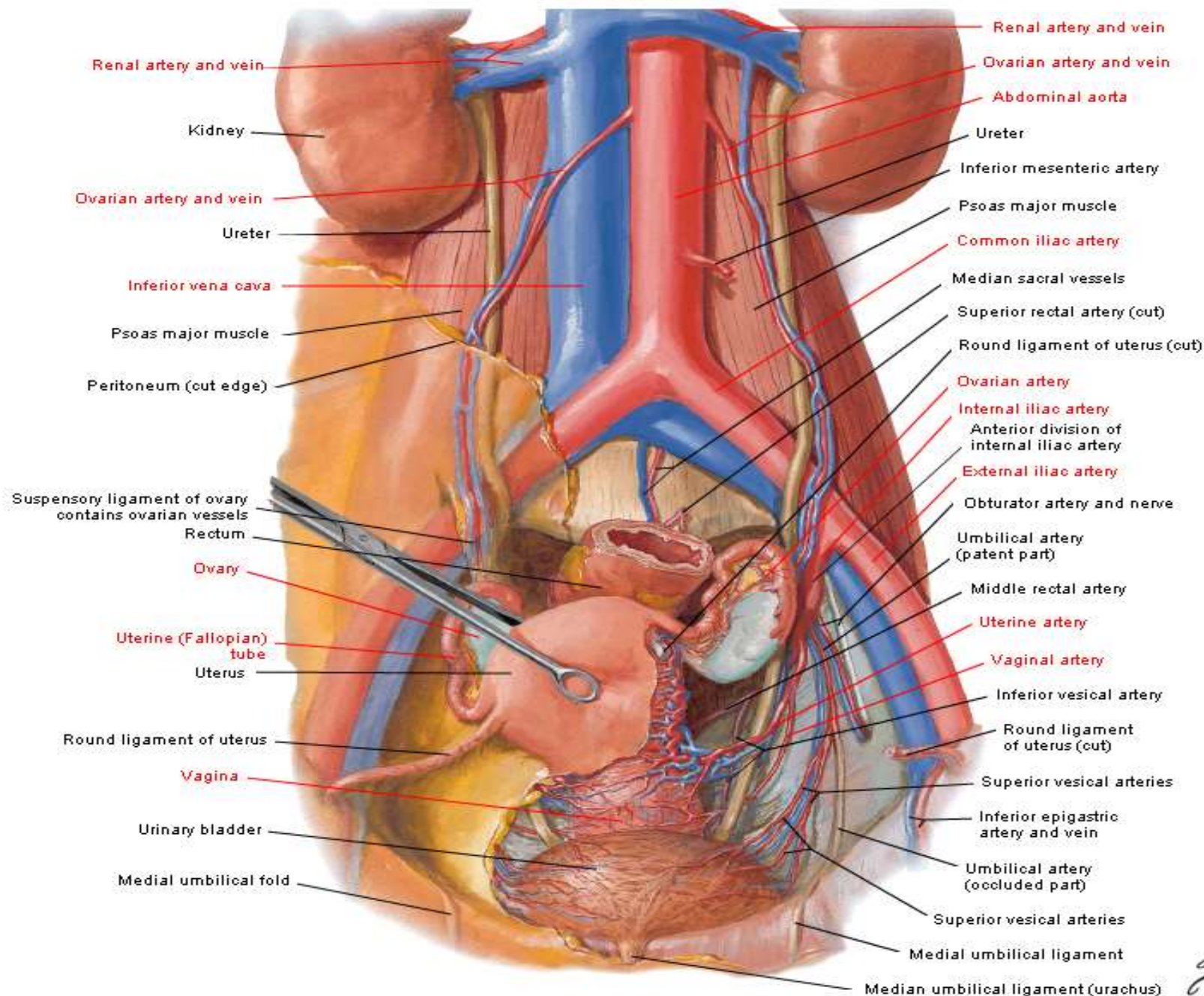


# Uterus, Vagina and Supporting Structures



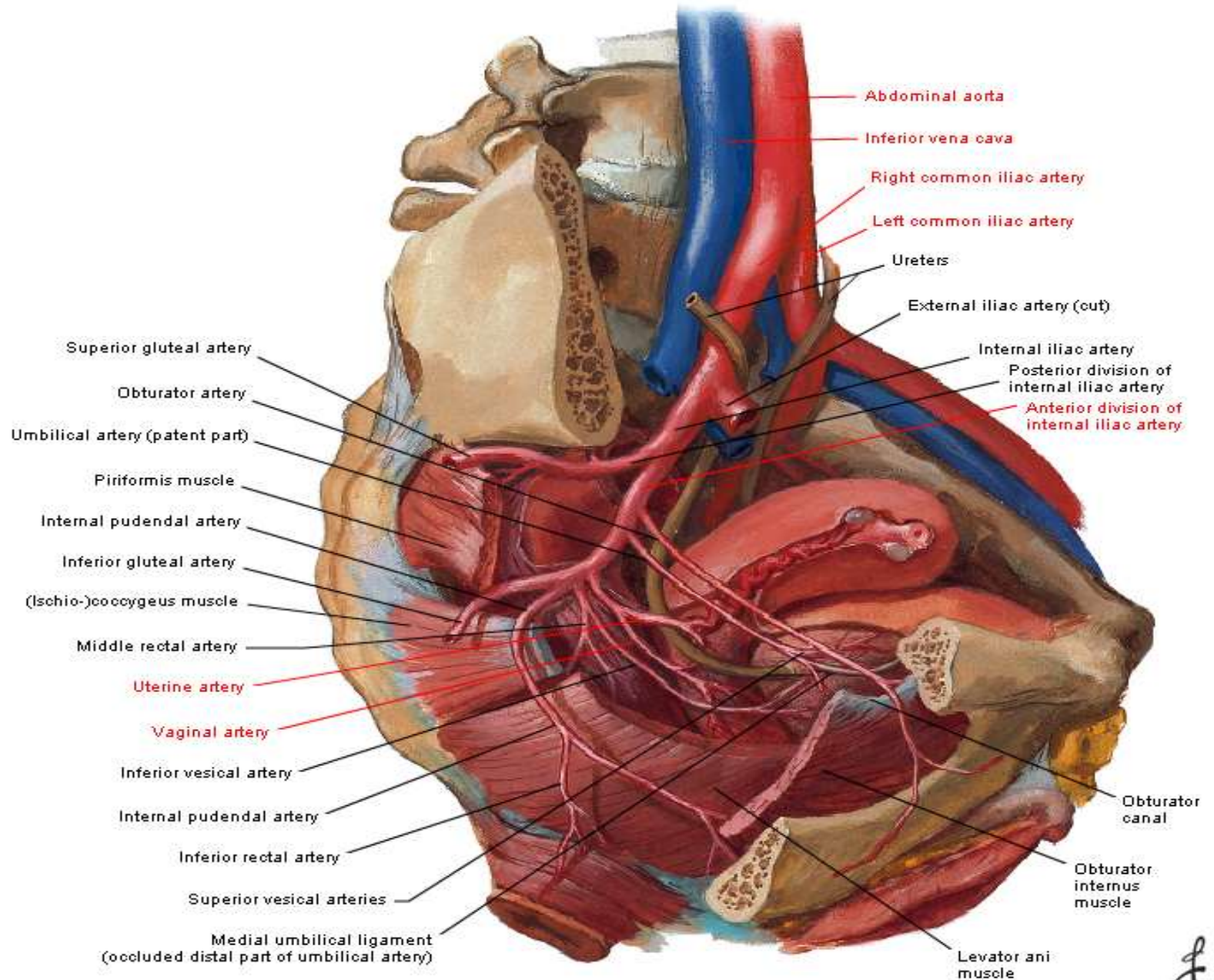
# Arteries and Veins of Pelvic Organs: Female

## Anterior View

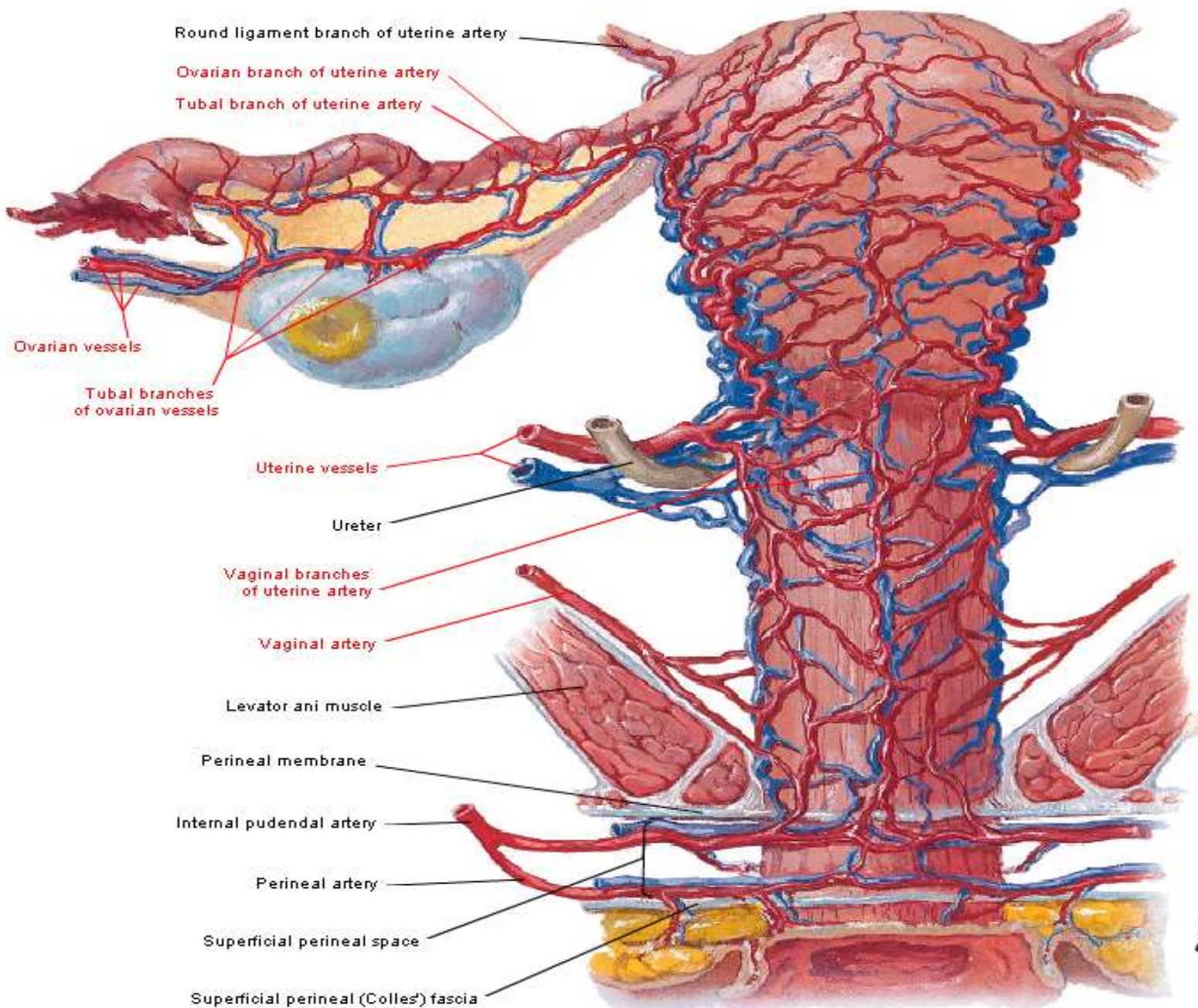


# Arteries and Veins of Pelvis

## Female - Right Paramedian Section: Lateral View



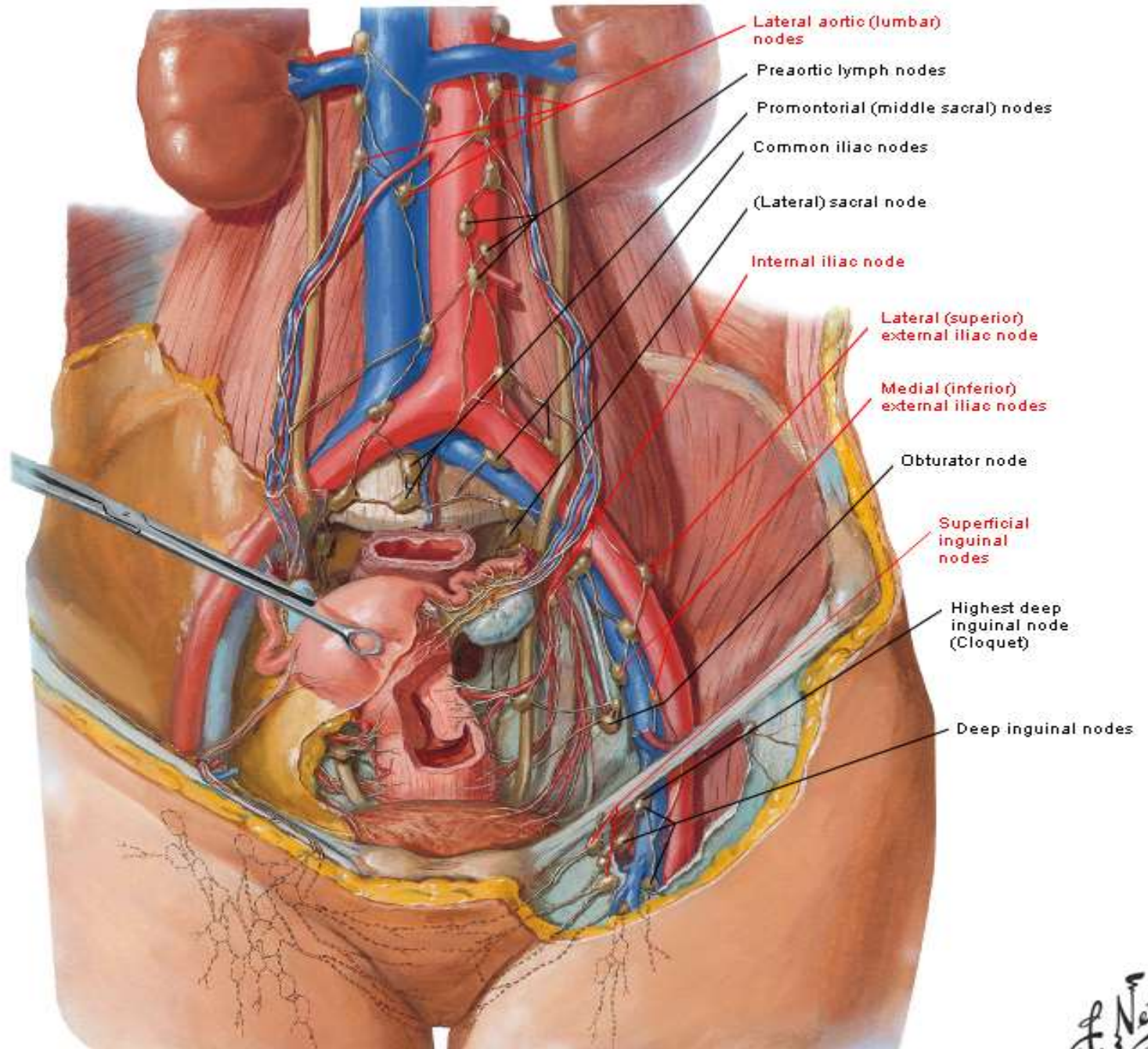
# Arteries and Veins of Uterus



F. Netter  
M.D.  
C. Machado  
M.D.  
© ION

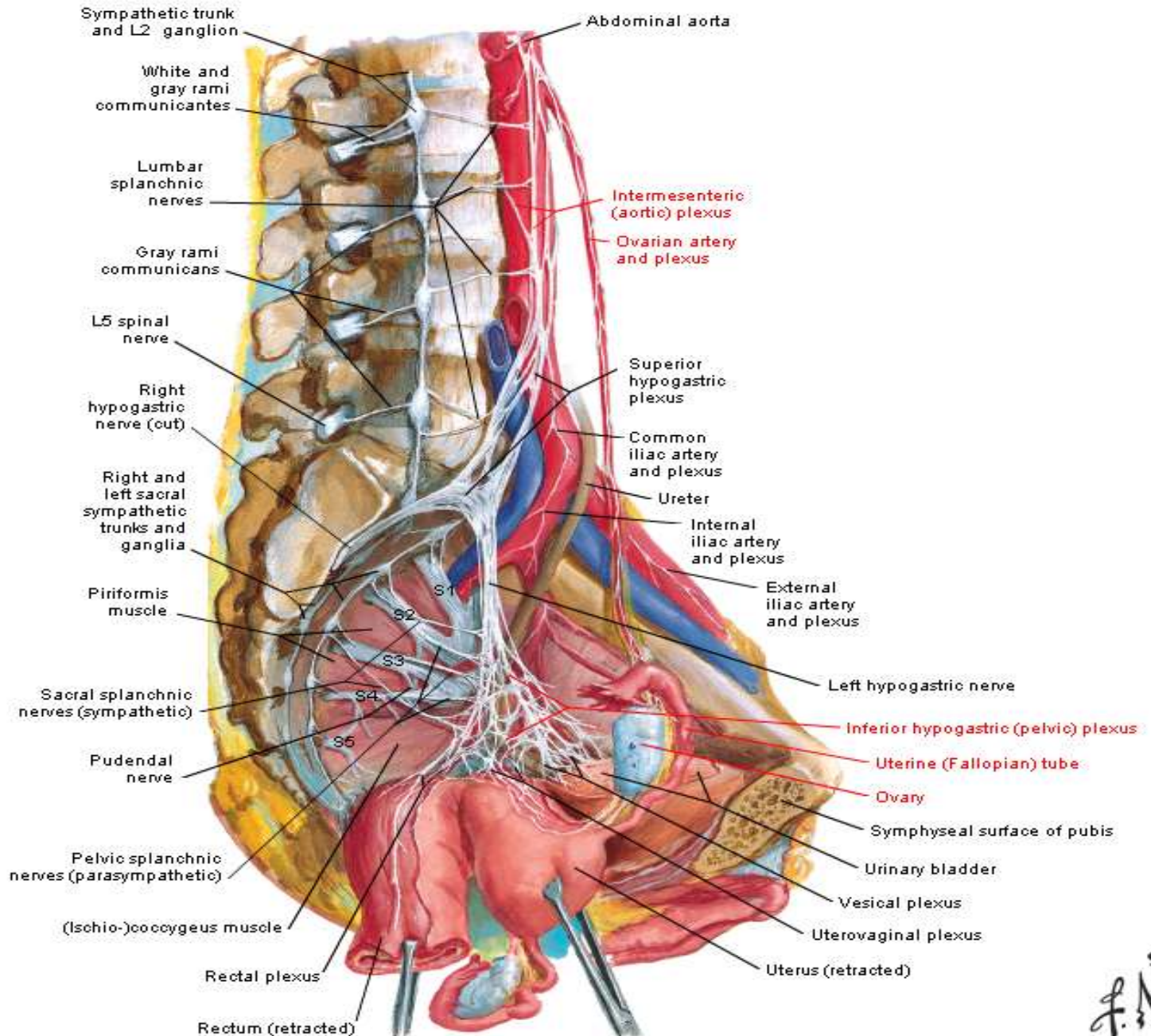


# Lymph Vessels and Nodes of Pelvis and Genitalia: Female



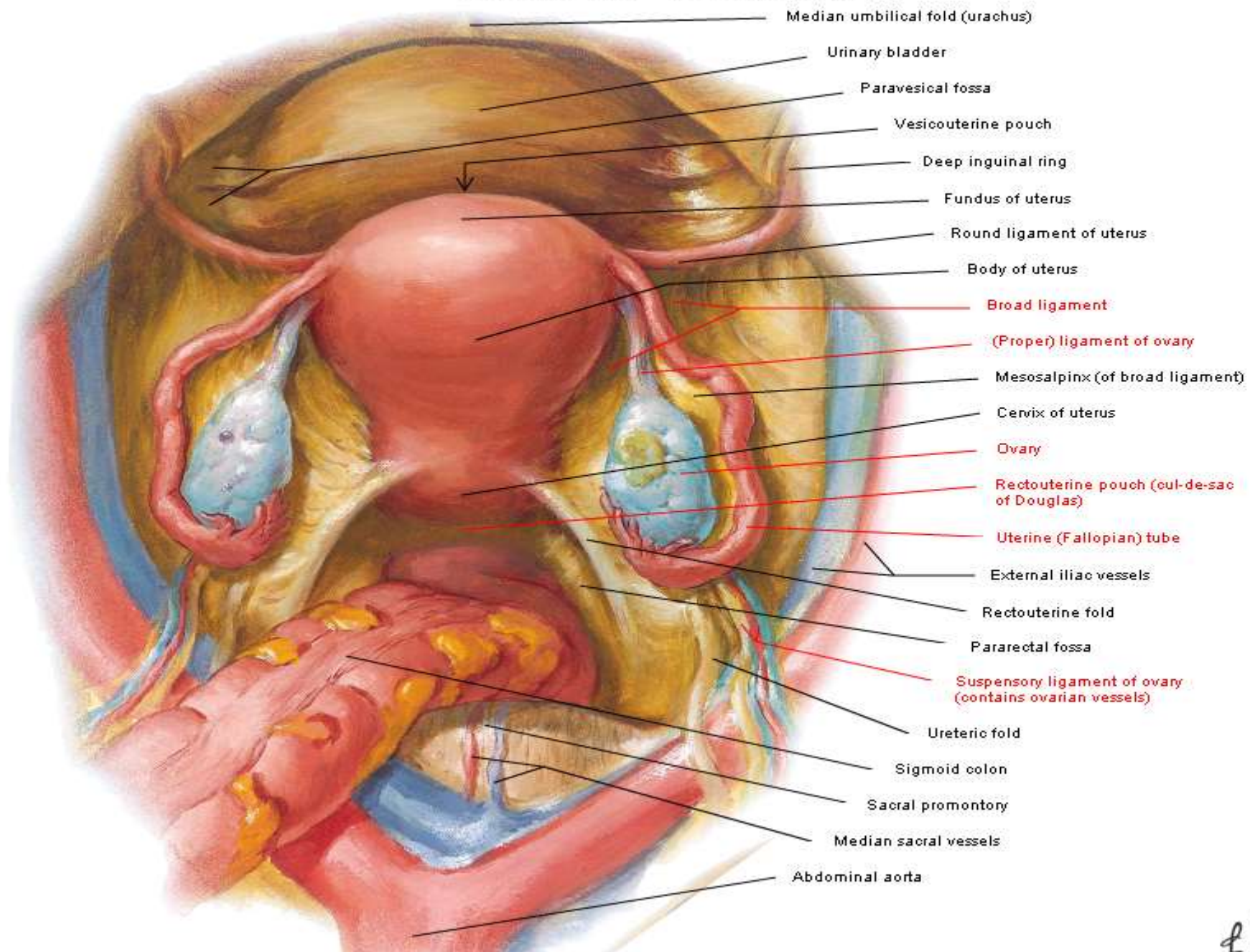
# Nerves of Pelvic Viscera

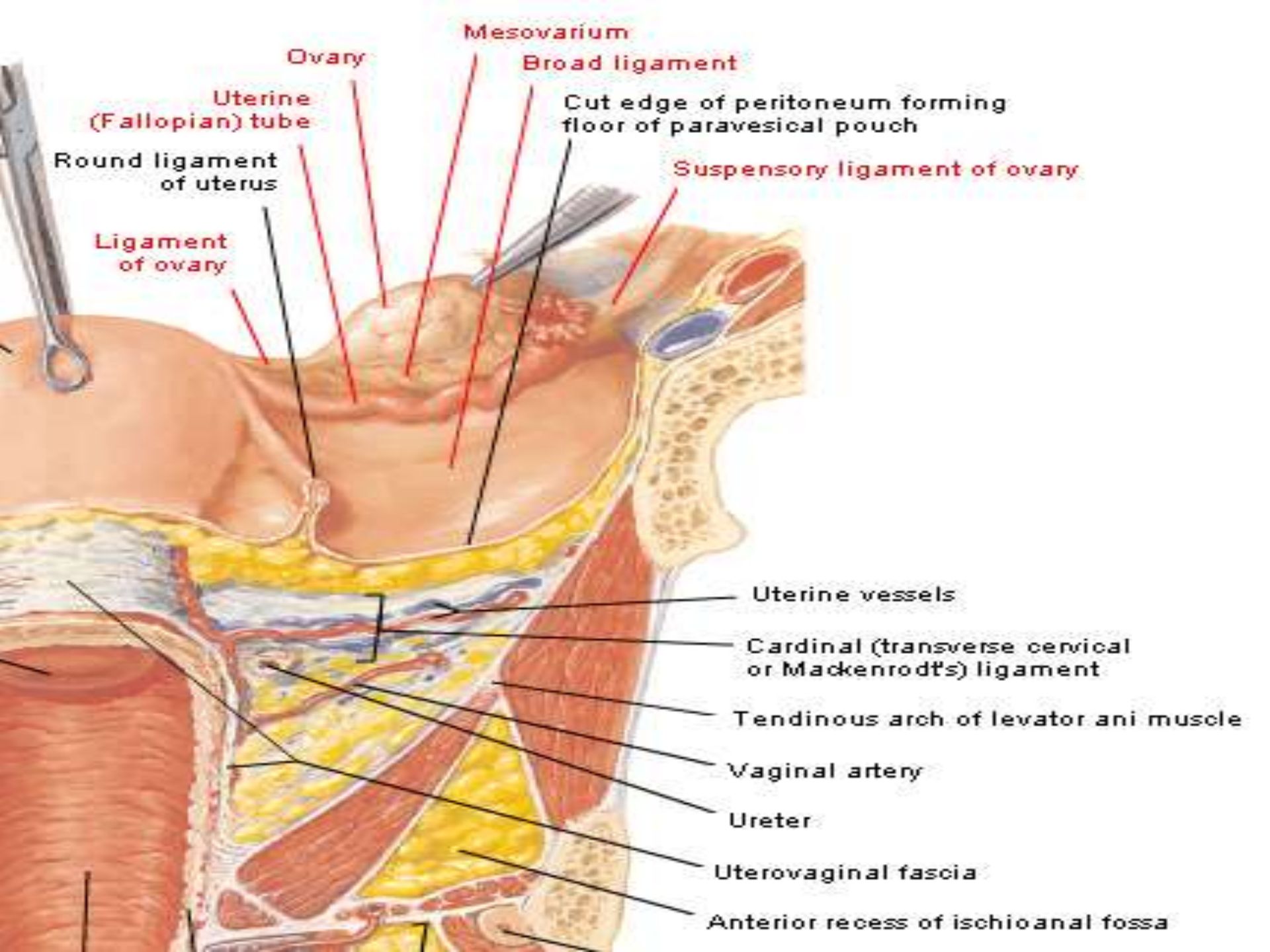
## Female - Sagittal Section



# Pelvic Viscera of Female

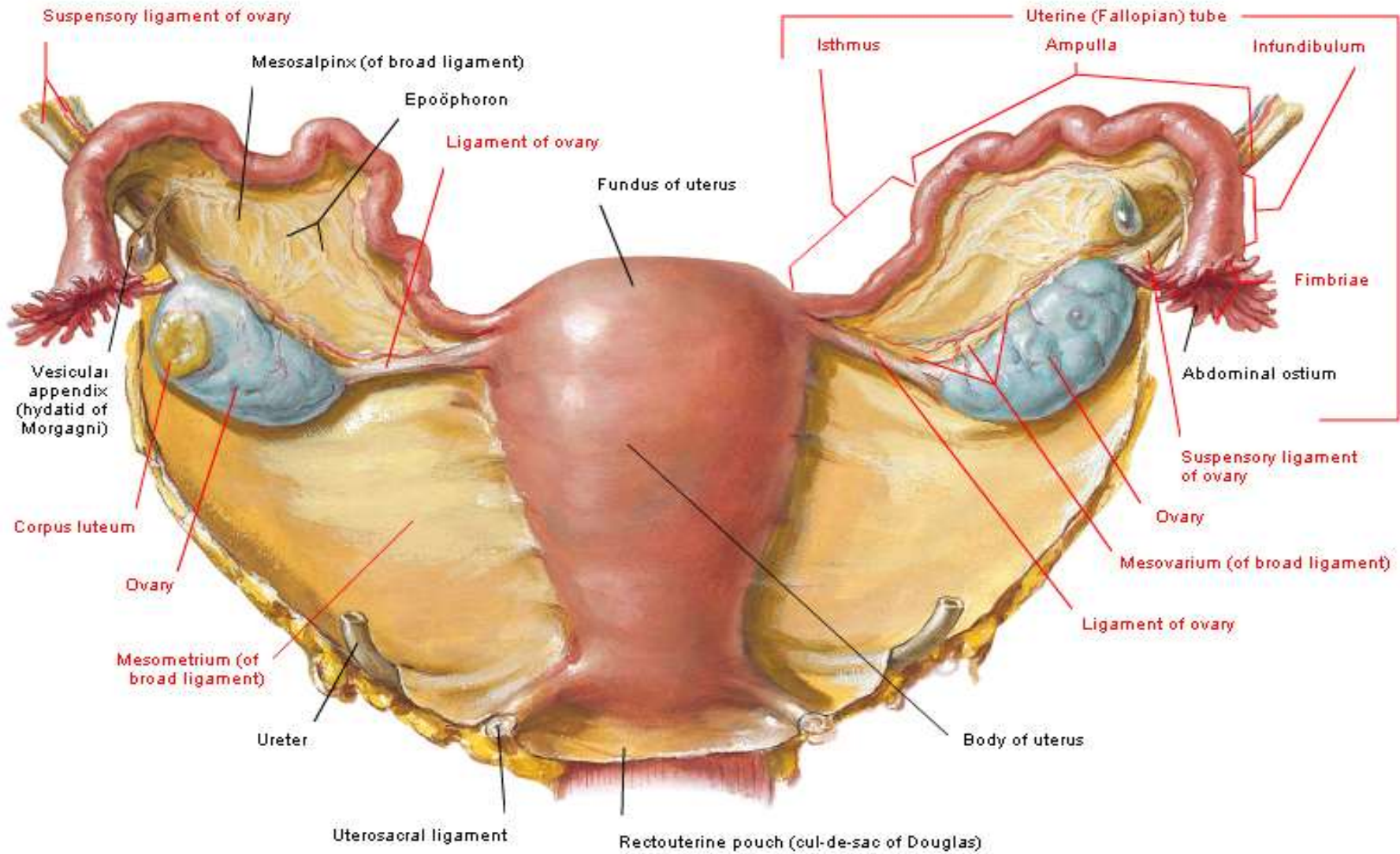
## Superior View - Peritoneum Intact



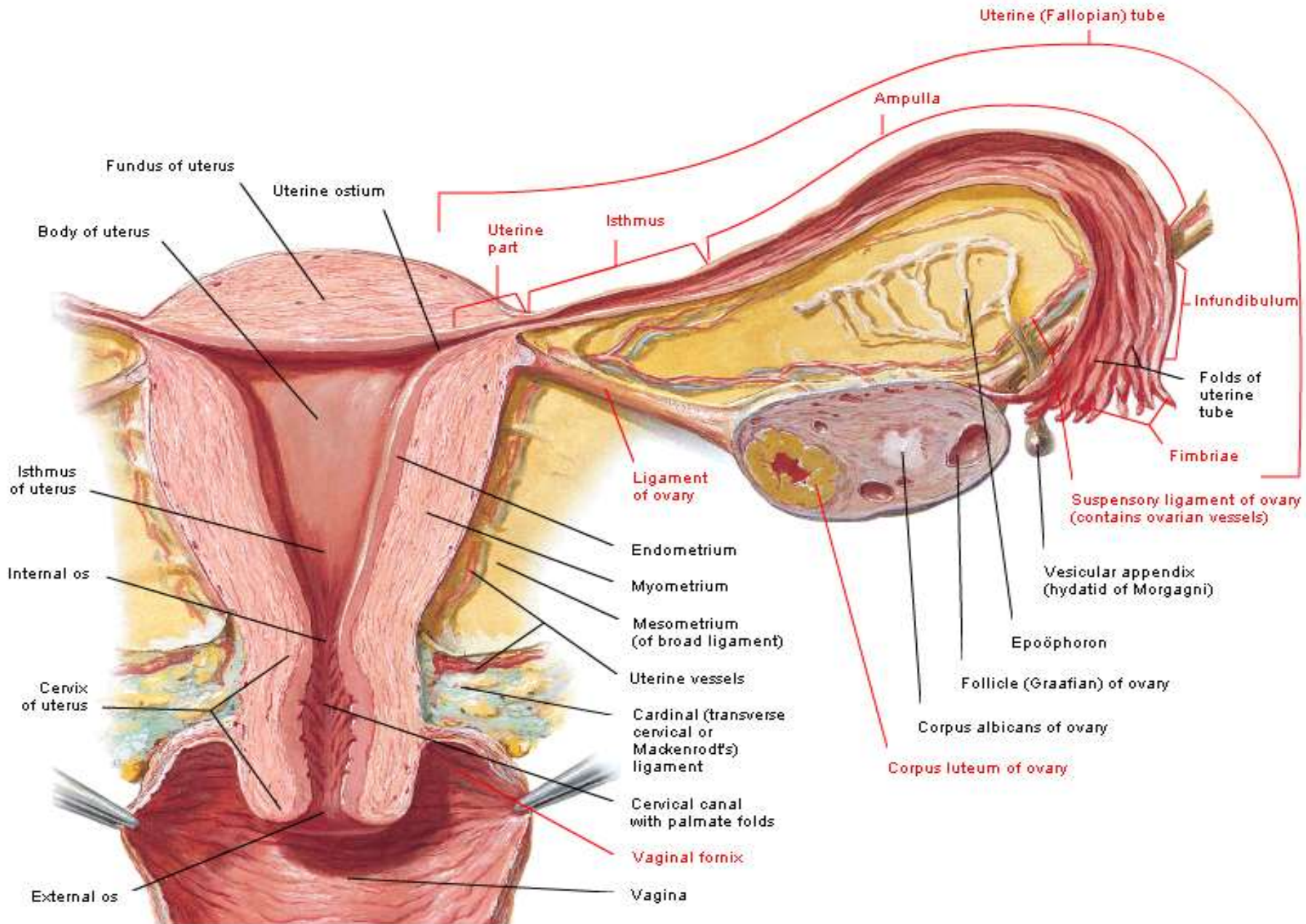


# Uterus and Adnexa

## Posterior View



# Uterus and Adnexa Frontal Section



Fundus of uterus

Uterine ostium

Body of uterus

Uterine part

Isthmus

Uterine (Fallopian) tube

Ampulla

Infundibulum

Folds of uterine tube

Fimbriae

Isthmus of uterus

Ligament of ovary

Suspensory ligament of ovary (contains ovarian vessels)

Internal os

Endometrium

Vesicular appendix (hydatid of Morgagni)

Myometrium

Epoöphoron

Mesometrium (of broad ligament)

Uterine vessels

Follicle (Graafian) of ovary

Cervix of uterus

Cardinal (transverse cervical or Mackenrod's) ligament

Corpus albicans of ovary

Cervical canal with palmate folds

Corpus luteum of ovary

Vaginal fornix

Vagina

External os